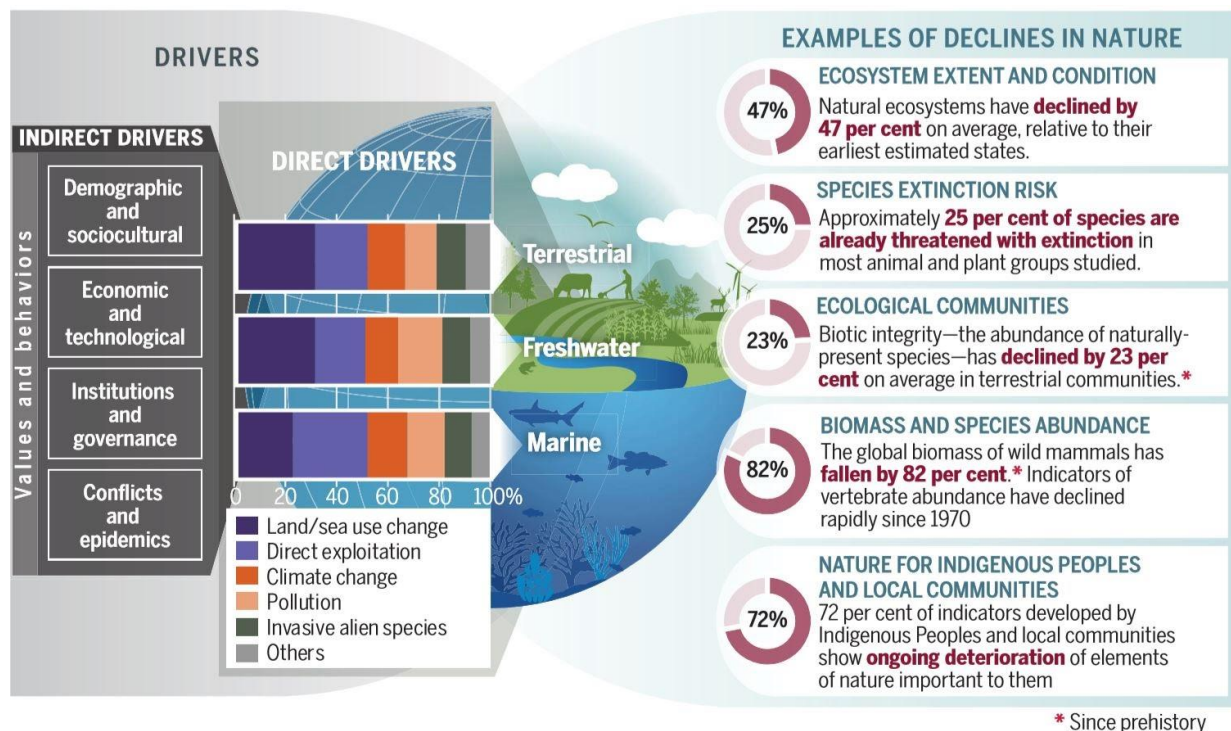


# EMELŐPONTOK

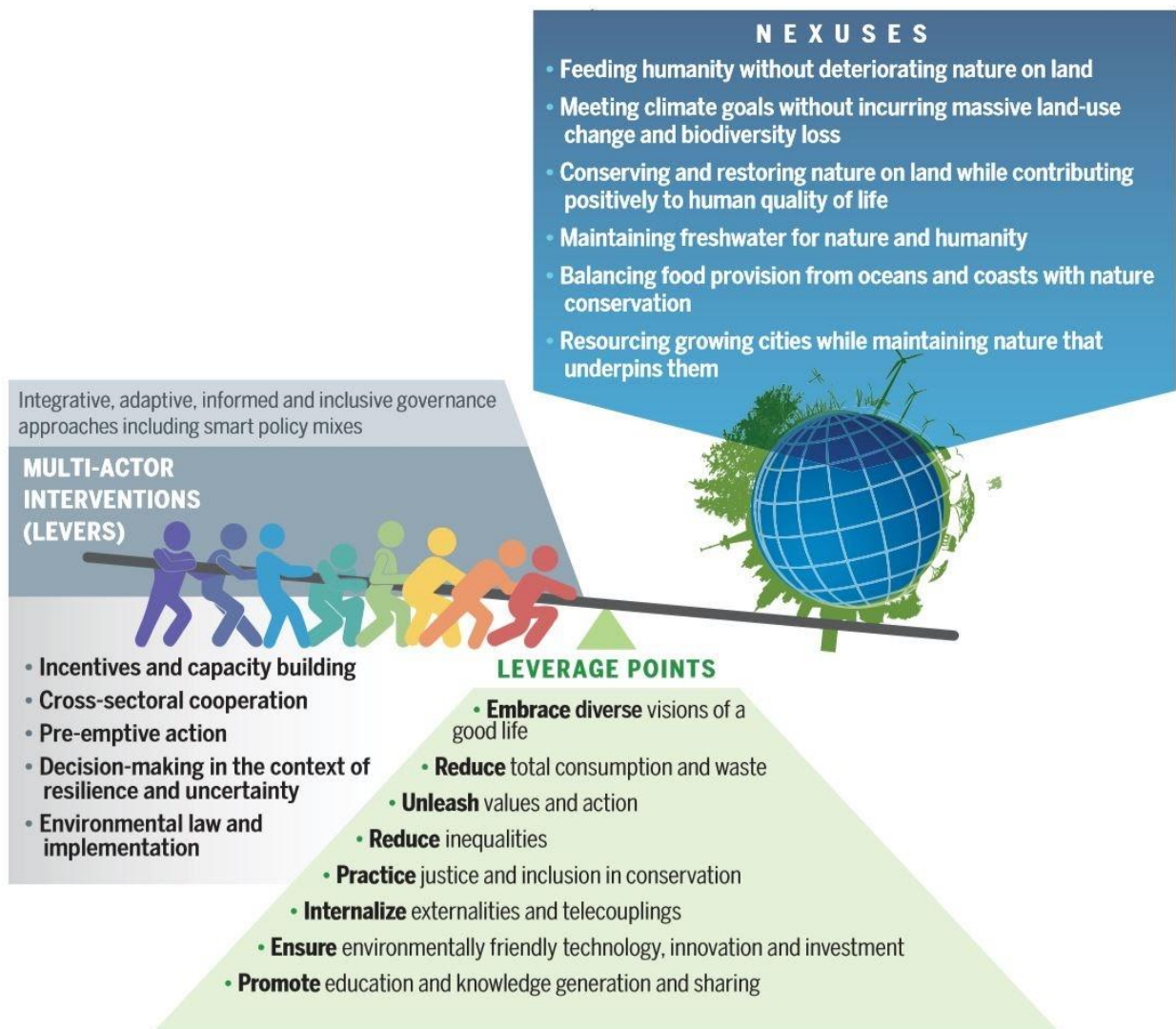
Az IPBES 2019-es jelentése alapján

- Forrás: Pervasive human-driven decline of life on Earth points to the need for transformative change <https://science.sciencemag.org/content/366/6471/eaax3100>
  - A teljes IPBES 2019-es jelentése elérhető itt (lehetséges megoldásokról az 5. fejezet szól): <https://ipbes.net/global-assessment>
1. enabling visions of a good quality of life that do not entail ever-increasing material consumption;
  2. lowering total consumption and waste, including by addressing both population growth and per capita consumption differently in different contexts;
  3. unleashing existing, widely held values of responsibility to effect new social norms for sustainability, especially by extending notions of responsibility to include the impacts associated with consumption;
  4. addressing inequalities, especially regarding income and gender, that undermine the capacity for sustainability;
  5. ensuring inclusive decision making and the fair and equitable sharing of benefits arising from the use of and adherence to human rights in conservation decisions;
  6. accounting for nature's deterioration from both local economic activities and telecouplings (70), including, for example, international trade;
  7. ensuring environmentally friendly technological and social innovation, taking into account potential rebound effects and investment regimes; and
  8. promoting education, knowledge generation, and the maintenance of different knowledge systems, including in the sciences and indigenous and local knowledge, especially regarding nature, conservation, and nature's sustainable use.

Although change at some of these levers and leverage points may encounter resistance individually, action at other levers and leverage points can enable such changes."



**Fig. 3. Examples of global declines in nature that have been and are being caused by direct and indirect drivers of change.** Each of the direct drivers of changes (land or sea use change; direct exploitation



**Fig. 7. Enabling transformative change.** Collaborative implementation of priority interventions (levers)