

Session 4: Scoping Priorities

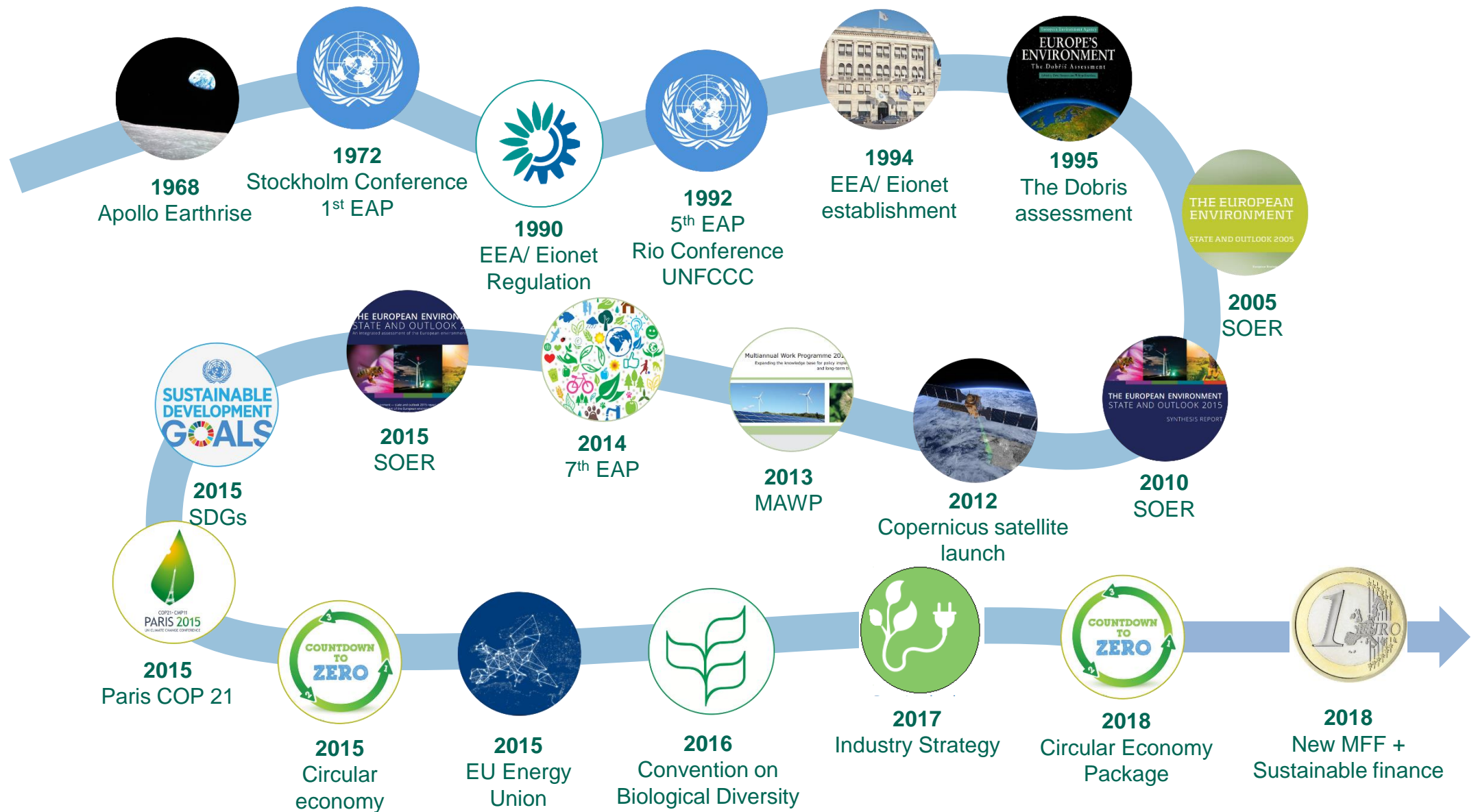
EEA update



Strategy and organisational context

- Framework:
 - Current Multiannual Work-Programme (MAWP)
 - Programming Documents
- Key processes:
 - Monitoring and Reporting Refit
- Response:
 - Organisational changes at EEA - adaptation to new challenges
 - Orientation of Strategic Area 1.2 Industrial Pollution

Continuous evolution of priorities



The emphasis on our activities

Multiannual Work Programme 2014–2018

Expanding the knowledge base for policy implementation
and long-term transitions



MAWP and Programming Document

- Objectives

- To support the European Commission and EEA member countries with the implementation of reporting obligations under the Industrial Emission Directive (IED) for industrial point-sources
- To support the reporting to the EU Registry on Industrial Sites and the integrated reporting on large combustion plants (LCPs) and the European Pollutant Release and Transfer Register (E-PRTR).
- Publication of the annual status reports on releases to the environment from industrial facilities and support to SOER 2020.
- To further improving the accessibility of data for key stakeholders and the wider public.



Monitoring and Reporting Refit

- Initiative led by DG ENV
 - 10 Actions ([link](#))
- Main actions of relevance for this NRC
 - Omnibus Regulation amending E-PRTR Regulation – Action 1
 - Rolling work programme 2018-2020 ([link](#)) – Action 2
 - Scope covers 181 reporting obligations in 58 pieces of EU law
 - Potential further streamlining of reporting related to industrial pollution EU law
 - Reportnet 3.0 (action 3)

Response to evolving priorities

- Organisational changes (specific to this NRC activities)
 - Industrial pollution to work together with files on waste management/prevention, resource efficiency and in connection with Circular Economy
- (Re-)Orientation for our Strategic Area
 - Increasing focus on assessment capacities
 - From industrial pollution to industry
 - Consolidation of streamlining projects