

# Land use and spatial planning (NRC LUSP)

EEA Visit in Hungary, 29<sup>th</sup> June 2016



## *Focus areas (in Hungary):*

### 1) Revision of the spatial planning system:

- *Revision of the National Spatial Plan, plans of high priority regions, plans of counties*

### 2) SMART City , support of smart city solutions:

- Elaboration of city evaluation and monitoring system
- Promotion of the elaboration of Smart city strategies
- Creation of best practice database
- Promotion of participative planning and awareness raising

# Land use and spatial planning (LUSP)

## *Linkage to the activities of EEA:*

### 1) Revision of the spatial planning system:

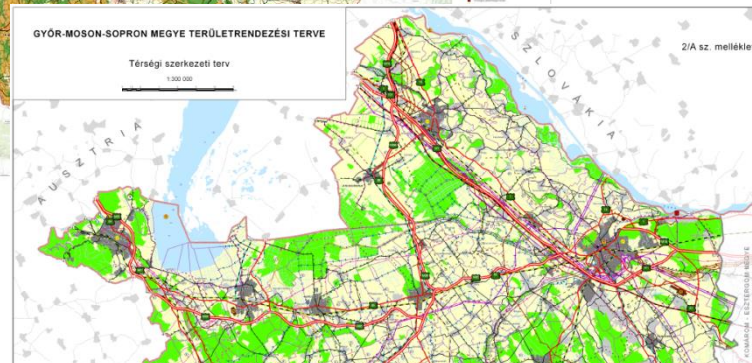
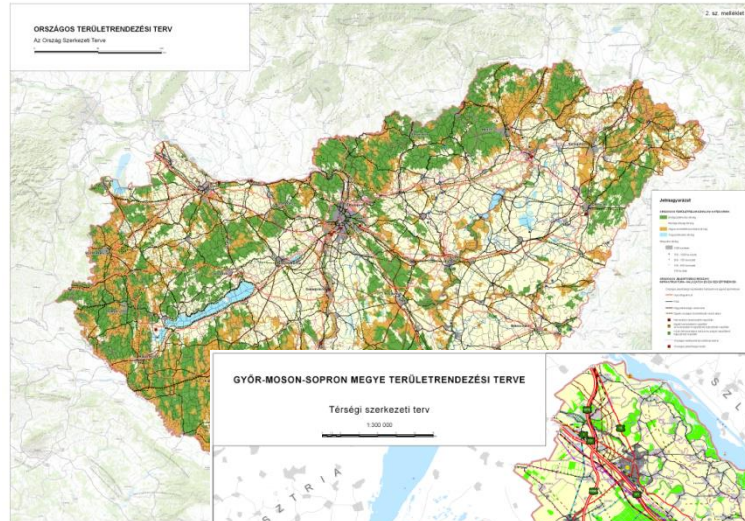
- Use of the data of Copernicus Programme (Corine Land Cover 2000, 2006, 2012; Urban Atlas, high resolution layers (HRL) etc.) in the impact assessment of spatial plans and in the forecast (model) of land use changes.
- Application of EEA methodology in the delimitation of zonal proposals (e.g. green infrastructure)

### 2) SMART City , support of smart city solutions:

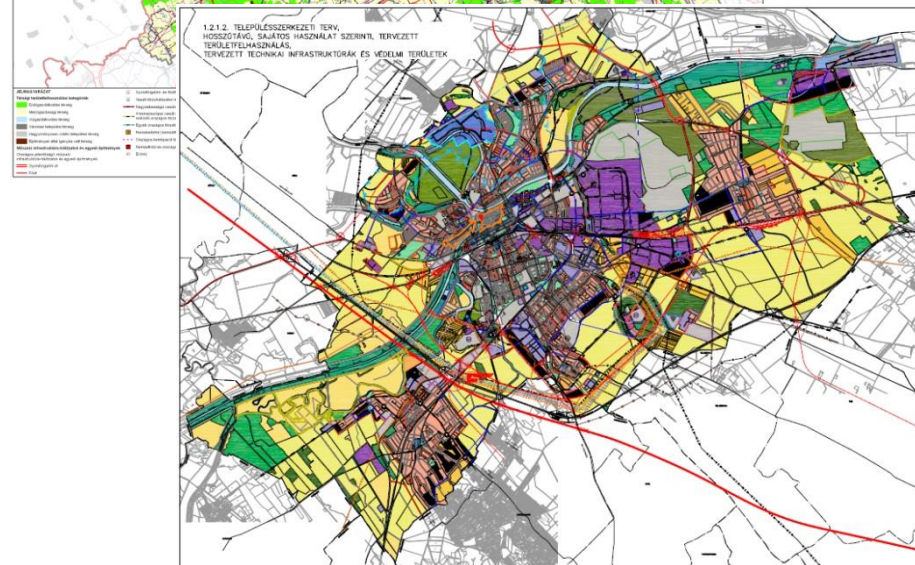
- EEA methodology on Integrative analysis of urban system
- EEA Urban vulnerability map

# Spatial planning

National Spatial Plan, NSP  
(accepted in 2003 as an act,  
revision 2008, 2013)  
S= 1: 500 000



Spatial plan of counties (NUTS3)  
and special regions  
(elaborated in accordance with the NSP)  
S= 1: 50 000



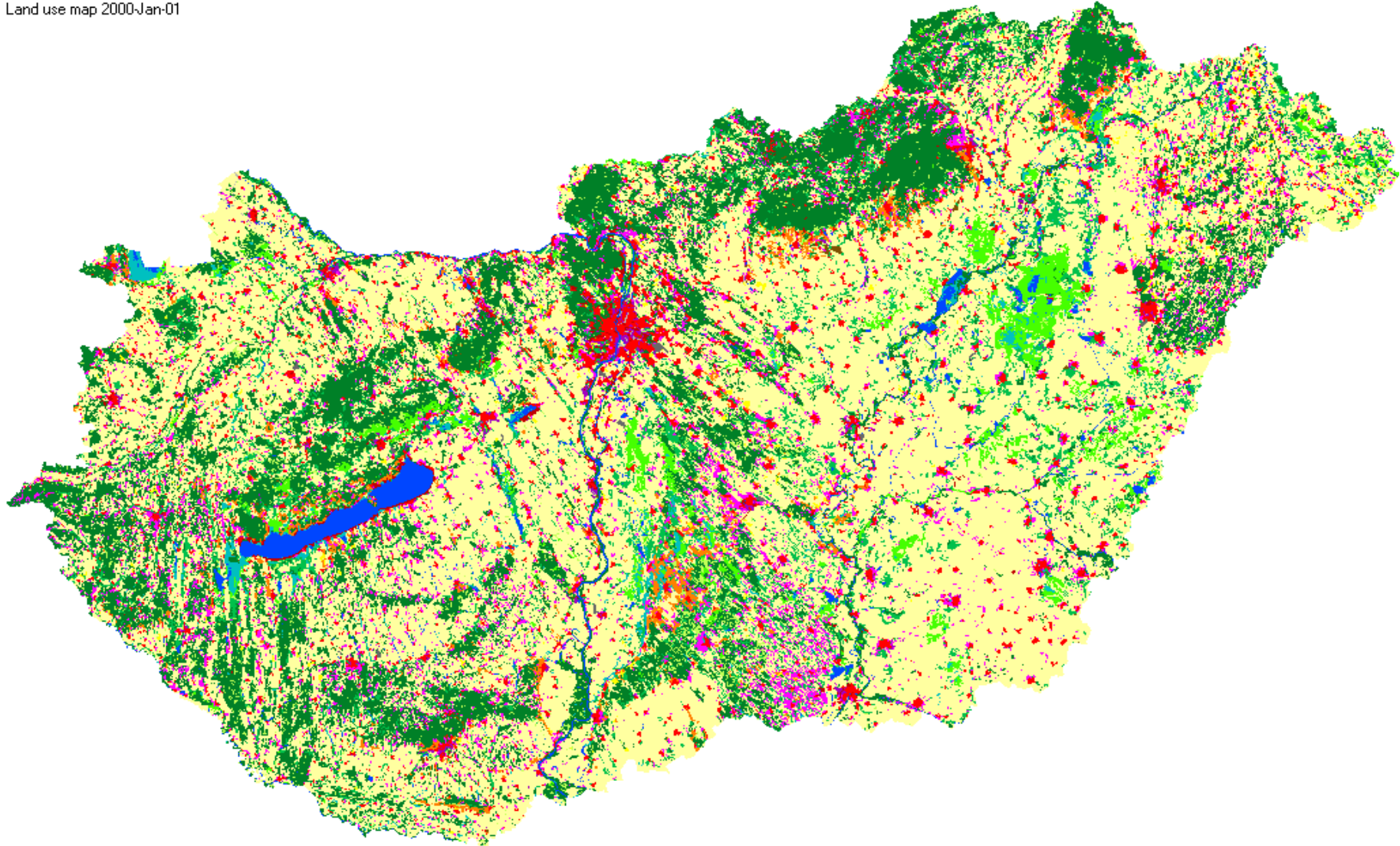
Urban level (LAU2) spatial plan  
(masterplan) and  
Local building regulation  
S= 1: 10 000



Zones in the national plan	Zones in the plans of counties
- National Ecological Network	- Core area
	- Ecological corridor
	- Buffer area
- Excellent quality arable land	
- Good quality arable land	
- Excellent quality forest area	
	- Area of afforestation
-	
- Area of special landscape protection	
- Area of national water quality protection	
	- Area of mineral raw material treasures
	- Area regularly
- Area of high water bad and so called VTT reservoirs'	
	- Area of geological hazards
- High priority defence area	
	- Defence area
	<b>Recommended county planning zones</b>
	- Area of scattered farmsteads
	- Area designated for landscape rehabilitation
	- Potential area of wind power plants
	- Regional flood risk management area

- Land use dynamics are complex and self organizing behaviour
- Planners and policy-makers have a decisive influence on future land use

Land use map 2000-Jan-01



# Smart city

Governmental Decision 1486/2015

Knowledge platform: Lechner Nonprofit Ltd.

- *National level coordination of smart city-related services and platforms*
- *Monitoring implementation*
- Working with cities
  - *Framework for smart city strategies*
  - *Evaluation and monitoring*
- Regulatory environment
  - *Coordinating local legislation and regulations*
  - *International benchmarking and integration*
- Education, research and development
  - *Pilot programs and projects*
  - *Incubation*

## Further interaction



- Further application of the results of Copernicus Land Monitoring
- Application of methodology related to the delimitation of green infrastructure network. Delimitation of the green infrastructure network in Hungary (proposed regional zone in spatial planning)



**Thank you for your  
kind attention!**