

# Indicators

## Country profiles

## Data releases

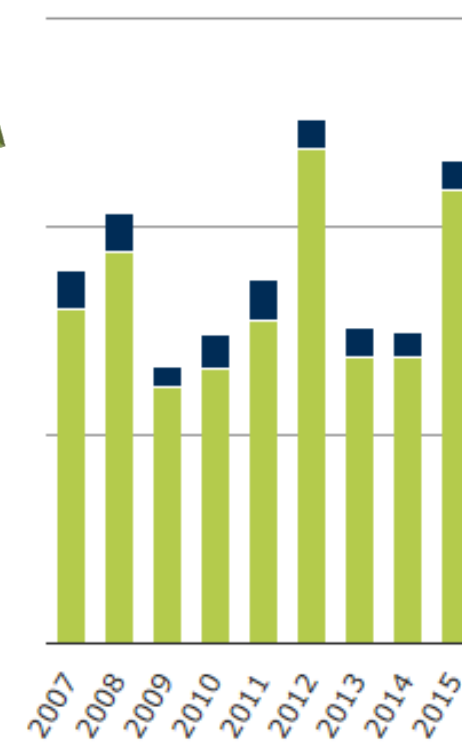
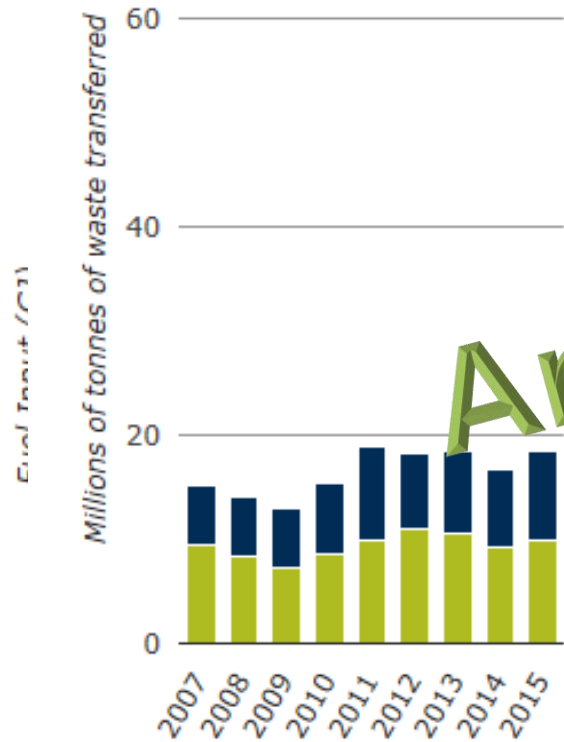


### Chemicals

### Energy

### Food and drink

### Iron and steel



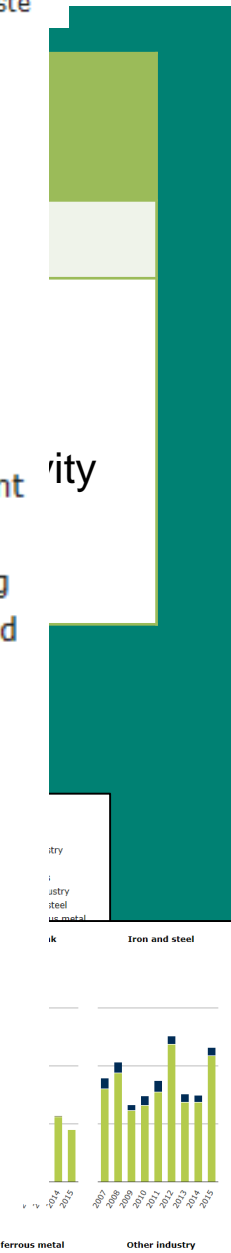
### Mining and quarrying

### Pulp paper and wood

### Non-ferrous metal

### Other industry

Annually updated



# FUTURE ADDITIONNAL INDICATORS ?

## WASTE

production, transfers and treatment options for industrial sector

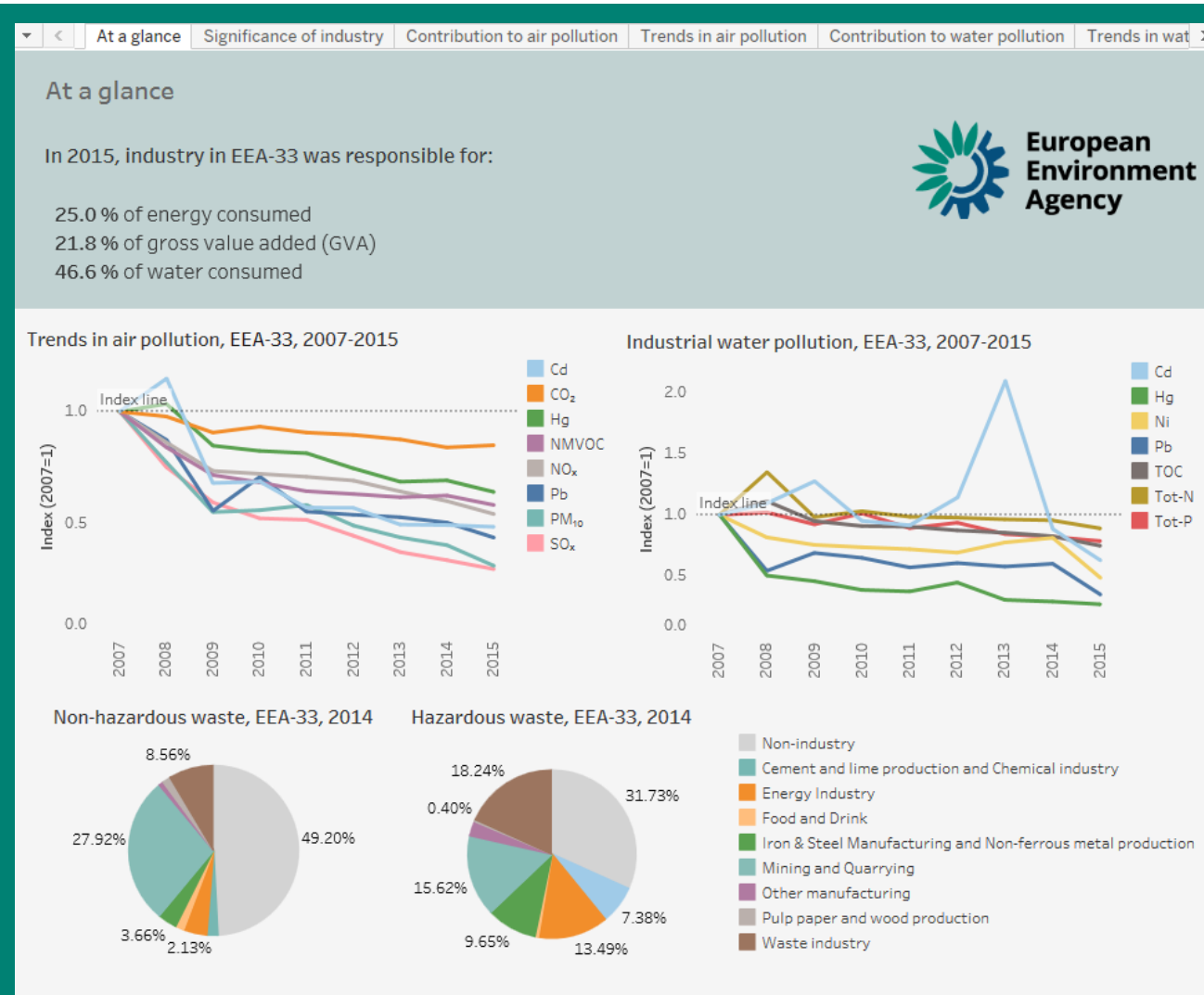
- Indicator of trends in reuse/recovery/recycling?
- Transboundary movement of hazardous waste: indicator of under/over capacity in certain regions/countries?
- trend in hazardous vs non-hazardous waste quantities per country?
- Emissions from WI plants per country – trend of emissions per unit of waste incinerated over time? (efficiency)

-> any opinion, idea, suggestion?

Please let us know !



# COUNTRY PROFILES 2018 – WHAT'S NEW?



Update without any big change

- EU 28 profile in addition to EEA 33
- Improvement of the visual (more filters)

-> No need for Eionet consultation in 2018

Starting date: June 2018

Publication: end of October 2018

# DATA RELEASES AND OTHER DISSEMINATION TOOLS (E-PRTR)

## The European Pollutant Release and Transfer Register (E-PRTR), Member States reporting under Article 7 of Regulation (EC) No 166/2006

Data — Prod-ID: DAT-26-en — Created 26 Apr 2018 — Published 30 Apr 2018 — Last modified 15 May 2018 — 11 min read

Topics: Air pollution Environment and health Industry

The European Pollutant Release and Transfer Register (E-PRTR) is a web-based register established by Regulation (EC) No 166/2006 which implements the UNECE PRTR Protocol, signed in May 2003 in Kiev.

European data Metadata

### European Pollutant Release and Transfer Register (E-PRTR) - Microsoft Access database and text format

E-PRTR data covering reporting for 2007 to 2016 by EU Member States, Iceland, Liechtenstein, Norway, Serbia and Switzerland. The provided files represent the status of the E-PRTR database as of April 2018. In addition to the newly reported data (for 2016), it provides corrections from many countries for the previous years. Please refer to the table below ("Additional information") for details on the countries and years that have been updated compared to the database published in 2017 (E-PRTR database version 12).

[+] Show table definition

- E-PRTR\_database\_v13\_csv (ZIP archive)  
49.77 MB Download file
- E-PRTR\_database\_v13\_mdb (ZIP archive)  
91.40 MB Download file

### European Pollutant Release and Transfer Register (E-PRTR) - KMZ format

- EPRTR\_facilities\_v13.kmz (ZIP archive)  
15.76 MB Download file

### Database structure and use information

- EPRTR\_database\_metadata\_v13.pdf (PDF document)  
939.54 KB Download file

### User-friendly tables in Excel

These tables, in Microsoft Excel format, offer an extract of the most relevant data.

- E-PRTR\_database\_v13\_xlsx7



-> E-PRTR data review tool

<https://cdr.eionet.europa.eu/help/eprtr>

<https://www.eea.europa.eu/data-and-maps/data/member-states-reporting-art-7-under-the-european-pollutant-release-and-transfer-register-e-prtr-regulation-19>



# DATA RELEASES AND OTHER DISSEMINATION TOOLS (E-PRTR)

The screenshot shows the E-PRTR web application interface. At the top, there is a navigation bar with the European Environment Agency logo and the text 'European Pollutant Release and Transfer Register'. A red 'X' is drawn over the 'E-PRTR' logo in the navigation bar. The main content area is titled 'Facility level' and includes a search bar and a table of facilities.

**Search Filters:**

- Country: France
- Year: 2016
- Pollutant Group: Heavy metals
- Pollutant: Mercury and compounds (as Hg)
- Releases to:  Water
- Transfers to:  Waste water

**Facilities Table:**

Facility	Postal Code	Address	Town/Village	Activity	Country
ETARES	76700	1461 route de l'estuaire	GONFREVILLE-L'ORCHER	5.(c)	FR
Station de Traitement des Eaux Biodégradables de Lacq	64170	Plateforme INDUSLACQ.	LACQ	5.(g)	FR
STEP - GRENOBLE / AQUAPOLE	38120	chemin des acacias	FONTANIL-CORNILLON	5.(f)	FR
STEP - NICE HALIOTIS	06200	333 Promenade des Anglais Station Haliotis	NICE	5.(f)	FR
STEP - SAINT-ETIENNE - FURANIA	42480	Lieu-dit "Le Porchon" - RD 1082	FOUILLOUSE	5.(f)	FR
STEP - SEINE GRESILLONS	78510	Seine Grésillons	TRIEL-SUR-SEINE	5.(f)	FR
STEP - Seine-centre	92700	5/7 Bb Louis Seguin	COLOMBES	5.(f)	FR
STEP - Tougas	44800	64 quai Emile Comerais	SAINT-HERBLAIN	5.(f)	FR
STEP - TOUQUES	14800	Chemin du Roy	TOUQUES	5.(f)	FR
STEP - Zone Portuaire	29200	4 rue Charles Cornic	BREST	5.(f)	FR
Usine de dépollution (UDEP) - Valence	26000	Quartier Mauboule	VALENCE	5.(f)	FR
Usine de dépollution de Romans sur Isère	26100	Quartier Bourbon	ROMANS-SUR-ISERE	5.(f)	FR

A map of France is shown on the right side of the interface, with several locations marked with green house icons. The URL <http://prtr.ec.europa.eu> is displayed in large white text on a dark green background to the right of the map.

-> e.g.: Releases and transfers of Hg to water in France

# DATA RELEASES AND OTHER DISSEMINATION TOOLS (LCP)

## Reported data on large combustion plants covered by the Industrial Emissions Directive (2010/75/EU)

Data — Prod-ID: DAT-149-en — Created 26 Apr 2018 — Published 04 May 2018 — Last modified 04 May 2018 — 3 min read

Topics: [Air pollution](#) [Industry](#) [Energy](#)

The European Union established an inventory of emissions from large combustion plants in 2004. The inventory was governed by the Directive on the limitation of emissions of certain pollutants into the air from large combustion plants (LCP Directive, 2001/80/EC) until 2015 year. As from 2016 reporting year, the reporting takes place according to the Industrial Emissions Directive (2010/75/EU, Article 72). Large Combustion Plants are those with a rated thermal input equal to or greater than 50 MW, irrespective of the type of fuel used. Power plants, steel works or district heating plants are examples of these type of plants.

[European data](#) [Metadata](#)

### Plant-by-plant emissions (LCP) and information on derogations

The database contains plant by plant information for Large Combustion Plants (LCP) on size, combustion technology, energy input, annual emissions (SO<sub>2</sub>, NO<sub>x</sub> and dust) and operation under specific derogatory regimes of combustion plants.

- 📄 [LCP\\_database\\_v4.0\\_mdb.zip](#) (ZIP archive)  
5.31 MB Download file
- 📄 [LCP\\_database\\_v4.0\\_csv.zip](#) (ZIP archive)  
2.63 MB Download file

### Information on the database structure and use

This document provides details on how the data is structured in the various formats to facilitate its use.

- 📄 [LCP\\_database\\_metadata\\_v4.0.pdf](#) (PDF document)  
1.05 MB Download file

### User-friendly tables in Excel

These tables, in Microsoft Excel format, offer an extract of the most relevant data fields in independent sheets for each year.

- 📄 [LCP\\_extract\\_v4.0\\_xlsx.zip](#) (ZIP archive)  
3.00 MB Download file

## Data and maps

[Global search](#)

[Datasets](#)

[Interactive data viewers](#)

[External datasets catalogue](#)

[Reported data on large combustion plants covered by the Industrial Emissions Directive \(2010/75/EU\)](#)

[Plant-by-plant emissions \(LCP\) and information on derogations](#)

[Information on the database structure and use](#)

[User-friendly tables in Excel](#)

[Maps and graphs](#)

[Interactive maps](#)

[Indicators](#)

[Data providers and partners](#)

[European data centres](#)

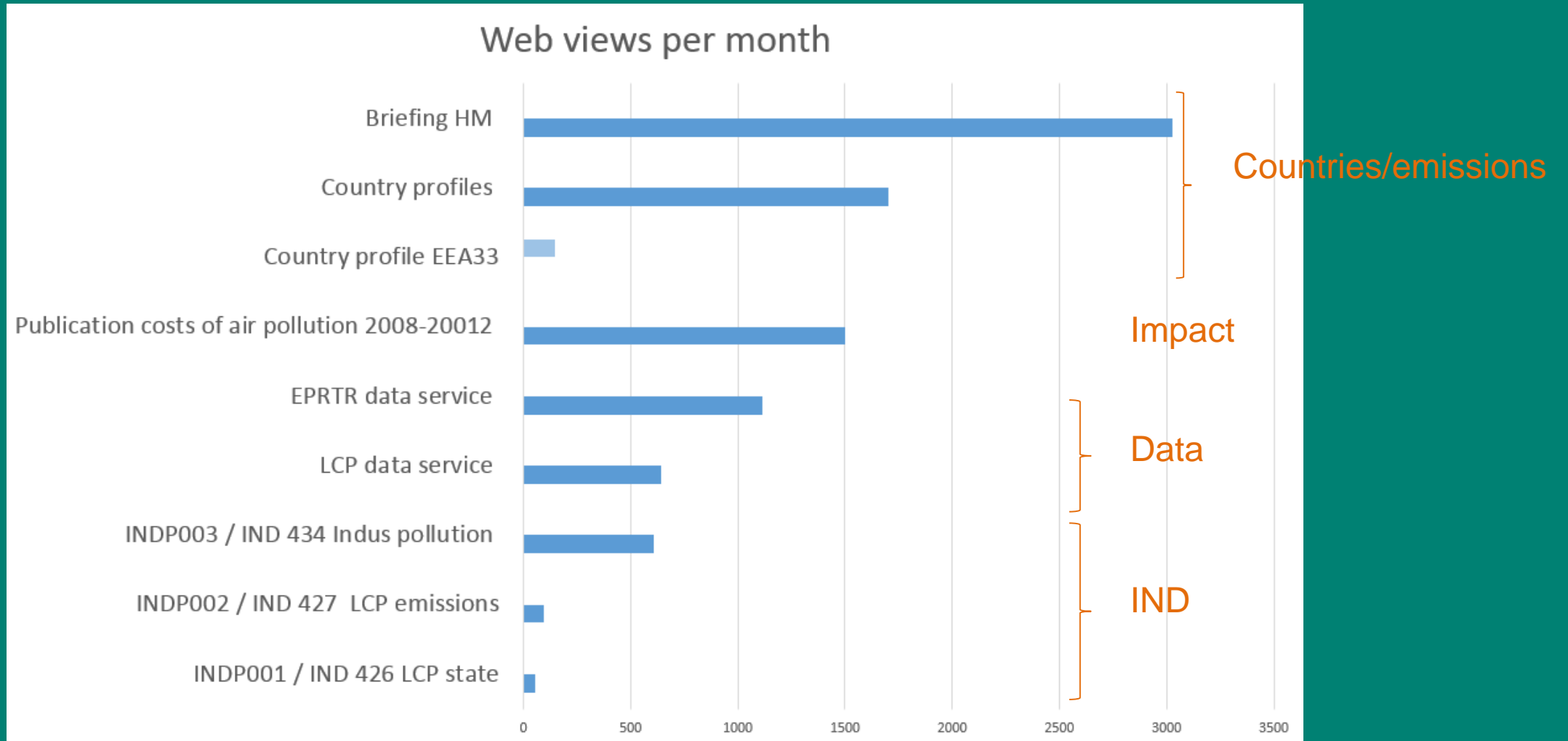
[Data visualisations](#)

[Dashboards](#)

[Follow us](#)



# Web frequentation





# CONTACT DETAILS



**European  
Environment  
Agency**

## Marthe Granger

Project manager - Industrial pollution

[marthe.granger@eea.europa.eu](mailto:marthe.granger@eea.europa.eu)

Phone: +45 3336 7152

Skype: marthe.granger@eea.europa.eu